



**Municipal
Pumping Stations**

APPLICATIONS FOR WATERTRONICS PUMPING SYSTEMS

*Potable Water Pumping Stations for Tower Filling
Transfer Stations - Industrial Boosters - Subdivisions
Commercial Developments - Irrigation - Fire Protection*

ANY COMBINATION OF THE ABOVE

Pressure & Flow Regulation

Electronic Butterfly Valves (EBV)
Variable Frequency Drives (VFD)
Multi-sensor Integration (MSI)

Code Compliance

AWWA - NFPA20 - FM/UL
Piping=Galvanized - Copper -
Stainless Steel - PVC - HDPE

Controls & Panels

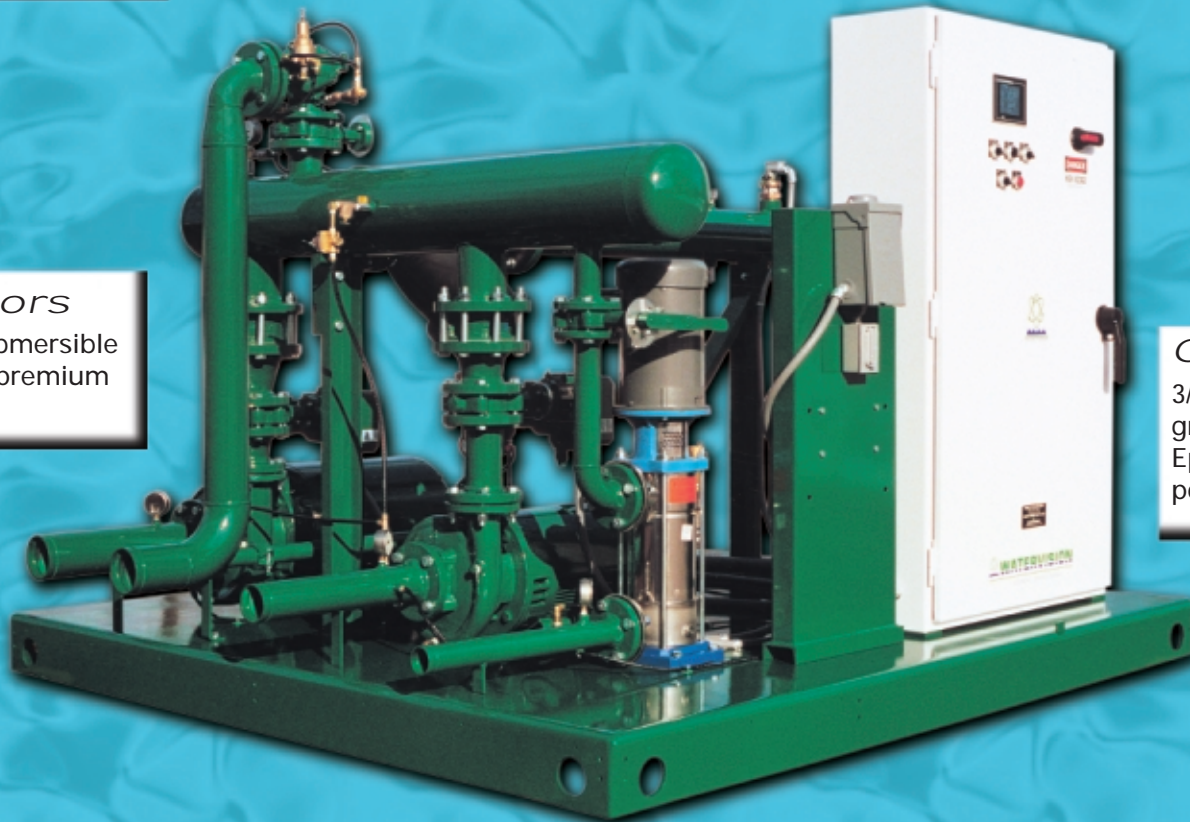
NEMA4 rated cabinets (standard), UL 508
panel facility, MOD-BUS/MOD BUS+
Communication, Touchscreen Operator
Interface, 3-stage surge protection.

Pumps & Motors

Vertical, Horizontal & Submersible
industrial grade pumps, premium
efficiency motors.

Construction

3/8" formed steel plate, welded &
ground smooth with rolled edges.
Epoxy primer and 2 part baked
polyurethane finish.

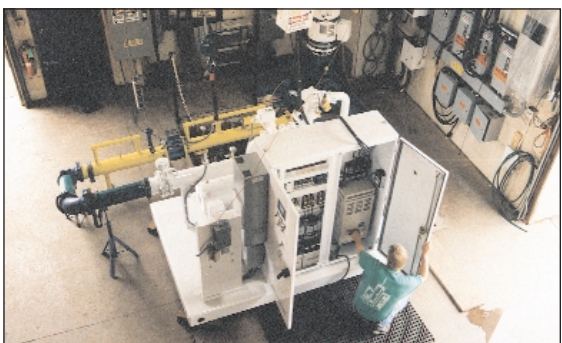




Watertronics in Hartland, Wisconsin has been an innovator in the manufacturing of electronically controlled pumping systems for over 25 years.



Every pumping system from Watertronics is custom engineered and built to customer specifications and exacting industry standards.



Each pumping system is dynamically flow tested in our factory prior to shipment. Mechanical, electrical and control systems are put through their paces and a full report is logged into the station records.



For information contact:

Greg Garasimowicz

phone: 262.367.1480

email: ggarasimowicz@watertronics.com



525 Industrial Drive, P.O. 530, Hartland, WI 53029-0530

Phone: 262.367.5000/800.356.6686 • Fax: 262.367.5551

www.watertronics.com