



# WaterMax S3

## The Smart System That Can Communicate With Your Central Irrigation System

- For suction lift, boost or flooded intake applications
- Flows up to 1000 GPM
- Combined motor sizes up to 105 HP @ 480V 3 phase  
(maximum identical duplex pumps = 2x50 HP)
- Voltage options  
240/1 phase - 208/3 phase - 240/3 phase - 480/3 phase

### Precise and powerful

The WaterMax S3 Pumping Systems offer both, VFD (Variable Frequency Drive) controls and electronically regulated fixed speed controls, prefabricated, skid mounted and self-contained systems. The S3 Series offers precise, reliable pumping power whether your water source is a lake, pond or a boosted city supply. It is ideally suited for a large commercial or a golf course irrigation system.

The S3 can provide the water and pressure desired up to 1000 GPM or 140 PSI. The WaterMax S3 integrates the latest in programmable logic control technology with state-of-the-art engineering, compact design layout and construction techniques that you would expect from the industry leader in prefabricated pumping systems.

### Perfect pressure regulation

VFD technology provides smooth, accurate, surge-free and energy efficient performance at varying flow rates.

### Monitor pump operations virtually from everywhere

S3 control platform includes an industrial grade Programmable Logic Controller with an easy to use, highly intuitive color touchscreen interface, Virtual Vision II. By adding the Watertronics developed Watervision Monitoring Software to Virtual Vision, the S3 Series pump station can communicate with PC-based central irrigation control systems. Watervision with PumpLink can be connected to an office PC via phone, short haul, radio, or fiber optic modems to provide the irrigation control system with critical interactive pump station data.



- WaterMax S3 can be custom tailored to exactly meet your requirements through a broad range of options
- Energy-efficient VFD system provides a surge-free soft start
- S3 software can communicate critical data to central irrigation control systems
- Pump Service Network (PSN) provides nationwide technical service for installation, start-up, user training and maintenance

### The Watertronics promise

Every WaterMax System is fully factory performance tested at field conditions prior to shipment and arrives at the job site ready to work.

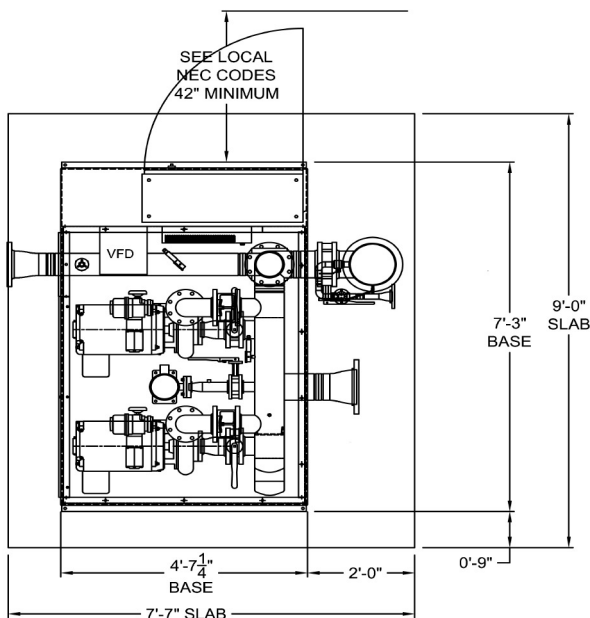
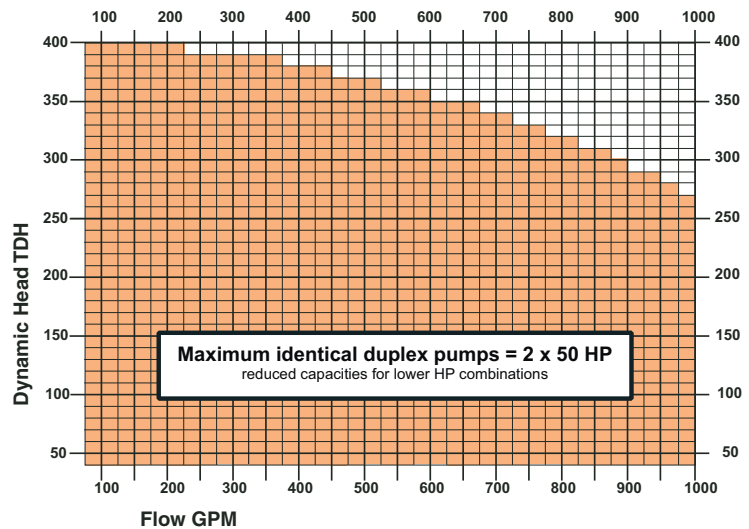
All WaterMax Products carry a 1 year limited warranty against defects in materials and workmanship.

## Standard Features

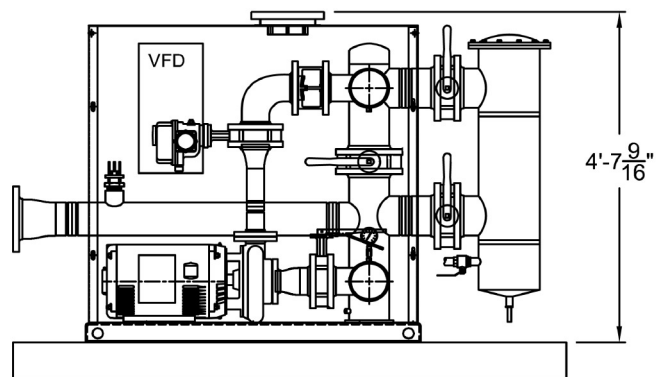
- Dead-front NEMA 4 service rated main disconnect panel
- U.L. listed control panel
- Microprocessor based software controls with AccuWare station software to maintain constant pressure at variable flow
- VirtualVision II color touchscreen operator interface with full color TFT Active Matrix
- Alarms:
  - Low pressure shutdown
  - High pressure shutdown
  - VFD fault shutdown (VFD station only)
  - High pump temperature shutdown
  - Phase loss (3 phase only)
- Automatic reset and time stamping of all alarms
- Lightning protection
- VFD pressure regulation with surge-free soft starting
- Pressure drop starting
- Stainless steel pressure transducer
- Flow sensor
- Pump construction features a bronze impeller and a cast iron volute with back pull out design
- Discharge isolation valve
- Priming port for suction lift application
- Positive prime assembly for suction lift application
- Stainless steel base and forced air cooled, lockable aluminium enclosure (unpainted)
- Industrial grade pipe coating system
- Stainless steel fasteners

## Available Options

- Suction & Discharge drop pipes
- Floating intake suction pipe assembly with foot valve
- Intake suction pipe with screen and vacuum pump assembly (eliminates the need for a foot valve)
- Medium Green or Sandstone color option
- Thermostatically controlled enclosure heater
- Vandal resistant alarm light
- Internal sound dampening insulation
- Magflo electromagnetic flow meter
- Suction scanner filtration
- Back flow preventer
- Watervision remote monitoring software
- Programmable setpoint lake/pond level controls
- Electronic Butterfly Valve (EBV) back up pressure regulating in the event of a VFD failure
- Electronic Butterfly Valve (EBV) pressure regulation in lieu of VFD
- Evolution Series: VFD jockey pump with EBV main pump
- Submersible turbine pumps
- Vertical turbine pumps (maximum identical duplex pumps = 30 HP)



TOP VIEW



SIDE VIEW